

**(Mouse) Tal1 Antibody (Center)**  
**Purified Rabbit Polyclonal Antibody (Pab)**  
**Catalog # AP21155a**

**Specification**

---

**(Mouse) Tal1 Antibody (Center) - Product Information**

Application	WB,E
Primary Accession	<a href="#">P22091</a>
Reactivity	Human
Host	Rabbit
Clonality	polyclonal
Isotype	Rabbit IgG
Calculated MW	34279

**(Mouse) Tal1 Antibody (Center) - Additional Information**

**Gene ID** 21349

**Other Names**

T-cell acute lymphocytic leukemia protein 1 homolog, TAL-1, Stem cell protein, Tal1, Scl, Tal-1

**Target/Specificity**

This mouse Tal1 antibody is generated from a rabbit immunized with a KLH conjugated synthetic peptide between 154-188 amino acids from the Central region of mouse Tal1.

**Dilution**

WB~~1:1000

E~~Use at an assay dependent concentration.

**Format**

Purified polyclonal antibody supplied in PBS with 0.09% (W/V) sodium azide. This antibody is purified through a protein A column, followed by peptide affinity purification.

**Storage**

Maintain refrigerated at 2-8°C for up to 2 weeks. For long term storage store at -20°C in small aliquots to prevent freeze-thaw cycles.

**Precautions**

(Mouse) Tal1 Antibody (Center) is for research use only and not for use in diagnostic or therapeutic procedures.

**(Mouse) Tal1 Antibody (Center) - Protein Information**

**Name** Tal1

**Synonyms** Scl, Tal-1

**Function** Implicated in the genesis of hemopoietic malignancies. It may play an important role in

hemopoietic differentiation. Serves as a positive regulator of erythroid differentiation.

**Cellular Location**

Nucleus {ECO:0000255|PROSITE-ProRule:PRU00981, ECO:0000269|PubMed:9391090}

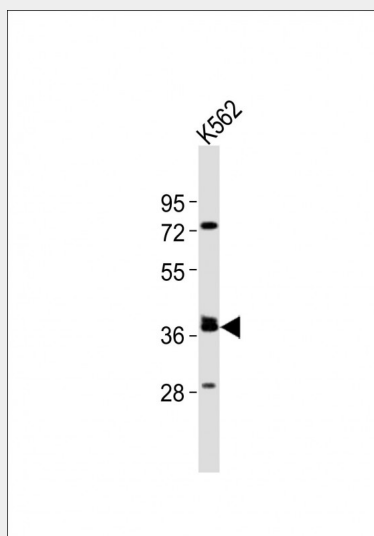
**Tissue Location**

Erythroid and myeloid cells.

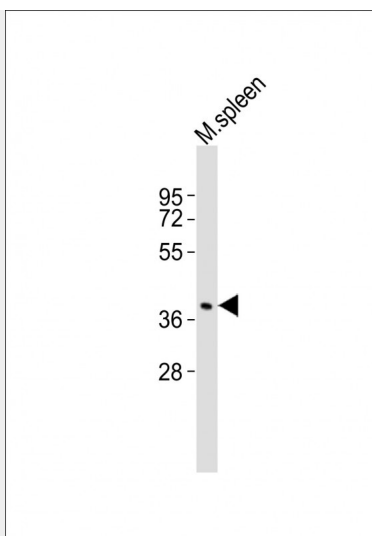
**(Mouse) Tal1 Antibody (Center) - Protocols**

Provided below are standard protocols that you may find useful for product applications.

- [Western Blot](#)
- [Blocking Peptides](#)
- [Dot Blot](#)
- [Immunohistochemistry](#)
- [Immunofluorescence](#)
- [Immunoprecipitation](#)
- [Flow Cytometry](#)
- [Cell Culture](#)

**(Mouse) Tal1 Antibody (Center) - Images**

Anti-(Mouse) Tal1 Antibody (Center) at 1:2000 dilution + K562 whole cell lysates Lysates/proteins at 20 µg per lane. Secondary Goat Anti-Rabbit IgG, (H+L), Peroxidase conjugated at 1/10000 dilution Predicted band size : 34 kDa Blocking/Dilution buffer: 5% NFDM/TBST.



Anti-(Mouse) Tal1 Antibody (Center) at 1:1000 dilution + mouse spleen lysates Lysates/proteins at 20 µg per lane. Secondary Goat Anti-Rabbit IgG, (H+L), Peroxidase conjugated at 1/10000 dilution Predicted band size : 34kDa Blocking/Dilution buffer: 5% NFDM/TBST.

#### **(Mouse) Tal1 Antibody (Center) - Background**

Implicated in the genesis of hemopoietic malignancies. It may play an important role in hemopoietic differentiation. Serves as a positive regulator of erythroid differentiation.

#### **(Mouse) Tal1 Antibody (Center) - References**

Begley C.G.,et al.Proc. Natl. Acad. Sci. U.S.A. 88:869-873(1991).  
Visvader J.E.,et al.Proc. Natl. Acad. Sci. U.S.A. 94:13707-13712(1997).  
Tang T.,et al.J. Biol. Chem. 277:18365-18372(2002).  
Goardon N.,et al.EMBO J. 25:357-366(2006).